

# HIGOLD®

## CONTACT

(+4) 0728 66 22 66  
(+4) 0729 44 24 22  
info@aplux.ro



**DISTRIBUTOR AUTORIZAT HIGOLD® ROMÂNIA**

525400, Târgu Secuiesc  
Cîmîtirului 24, Corp B  
Jud. Covasna  
România



# HIGOLD®



OUTDOOR FURNITURE COLLECTIONS 2026



**HIGOLD®**

## VISION

### **Our Mission: Strive for creating a healthy and satisfying lifestyle for human beings**

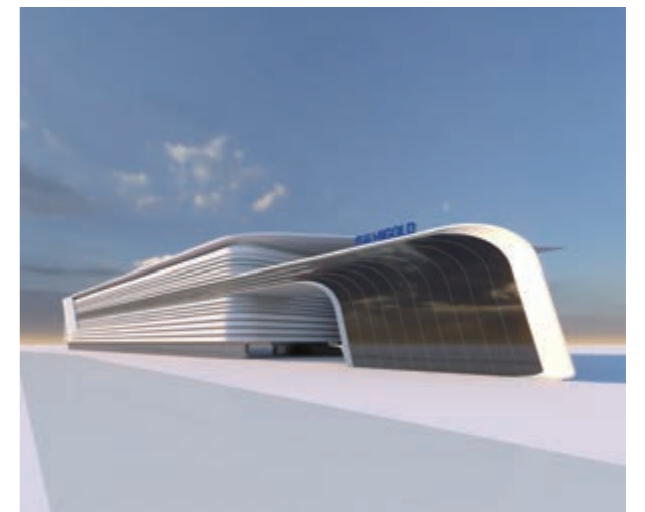
Rather than just a simple supply and demand company, Higold's ideology is to provide a better and elegant lifestyle with our products. With our unique and innovative product designs, our outdoor furniture gives our customers a better reason to stay outdoors.

### **Our Core Value: Cooperative, Win-Win, Creative and Leading**

As an industry innovator, we wish to have more partners to join us in this great area to achieve a win-win situation by optimizing respective strength and integrating resources; We stick to innovate and sustain business operation with a persistent vigor and vitality, to keep the advantage in being a leading enterprise and to always lead people to a better lifestyle.

### **Our Objective: Create Higold as an international brand of outdoor furniture and industry innovation leader**

With our product's design, innovation, quality and service, we have been increasing the value of Higold's international reputation in the outdoor furniture industry. As a result, customers are able to enjoy the quality and satisfaction of our products. Higold will always be the innovation leader and set as the benchmark in the industry.





# HONORS

Red Dot Award Winner

iF Design Award Winner

China Red Star Design Award Winner

China Canton Fair Design Award Winner

Asia-pacific Pinnacle Awards 2017

German GS Quality Inspection Certification

BSCI Certification

British Crown ISO9001 Quality Inspection Certification

Pininfarina Joint Design Institute

National High-tech Enterprise



Reddot Design Award



iF Design Award Winner



Red Star Design Award



Canton Fair Design Awards Winner



2017 Pinnacle Awards Asia pacific Winner



Pininfarina Co-designing institute



GS Quality Test Certification



BSCI certification



ISO 9001 Quality Management Certification



National High Tech Enterprise

DESIGN POWER





The winning combination between Pininfarina and Higold continues through the launch of a new iconic outdoor sofa. After the successes of Bold and Onda, a new masterpiece becomes part of the Higold by Pininfarina family.

“Armonia” has been conceived to bring the elegance of the interior environments to the outdoor spaces, creating a seamless and elegant living experience. The juxtaposition of contrasting elements is the main component around which the design language of this new sofa plays. The use of wood and braided rope gives it an artisanal and classic look, balanced by the modernity of the clean lines and the shaped body. The play of contrasts continues through the dualism between soft and rigid surfaces, full and empty spaces, modernity and past, reflecting the style of Pininfarina centered on the tradition of the new.

Dualities and contrasts, however, are not meant to create splits, but as a constant tension towards a new balance to create harmony. Finally, the use of specially designed materials allows this sofa to be enjoyed in outdoor environments in total safety and ensuring top performance against atmospheric agents without compromising aesthetics and comfort.

“Armonia” joins to the list of products designed by Pininfarina for Higold, a collaboration born in 2017 that over the years has seen two excellences in the field of furniture give ample vent to their creative flair.



# Onda

OUTDOOR FURNITURE COLLECTION DESIGNED  
BY PININFARINA FOR HIGOLD



Onda was born to blend in different environments and, at the same time, to make them unique.



Being conceived for the outdoor, the Pininfarina design team took the inspiration from the dynamism, elegance and purity of the ocean waves, the empty space that is created when a wave is broken, resulting in to a hollow or tube wave (onda in Italian).

The heart of the Collection is the structure, an aluminum band sustaining the cushions and becoming the iconic element of the whole Collection. Characterized by fluid lines - as the ones of the wave - the band beyond being an aesthetic element becomes also a functional element, a rigid armrest that can be used to lean objects. The choice of the materials come from the Pininfarina 360° design experience: the aluminum - coming from the car sector - for the structure , the fabrics - used in the yachts for its resistance - for the cushions.

"We have looked at the magic of nature to give life to Onda which is distinctive and, at the same time, able to be integrated in different environments. Technology and know-how coming from different sectors make it really unique" affirms Paolo Pininfarina, Pininfarina Chairman.

"Pininfarina always brings breakthrough visions and futuristic designs to the world. The design of Onda is influenced by car design in the technology and in the use of top materials. We are sure the new revolution is ready in the outdoor furniture industry!" affirms Alwin Ou, Chairman of Higold Group.

Onda is the second project born from the collaboration between Higold and Pininfarina, after the Higold headquarters in Shunde presented in march 2017.





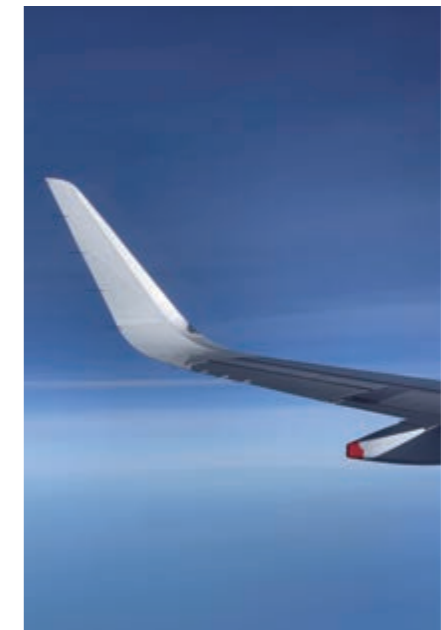
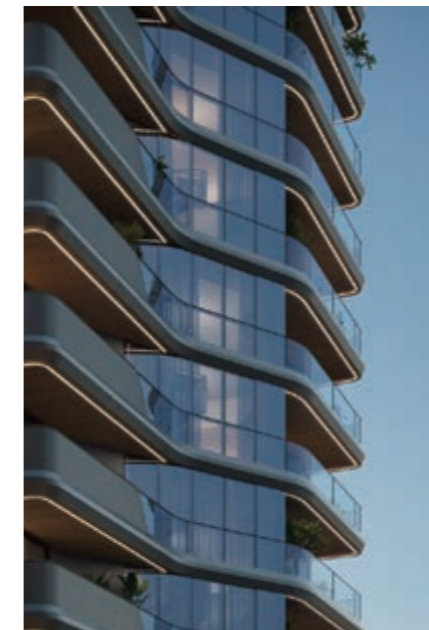
*wing*



DESIGN OF PININFARINA  
OUTDOOR FURNITURE

Inspired by the lightness of wing, the archetype par excellence that combines lightness and strength-in the WING collection, the designers were guided by the concept of physical and perceived lightness.

The dynamic, pure and elegant lines give the collection a style suitable for both urban contexts and environments where nature is the protagonist. The elements of the collection are characterized by a folded aluminum structure and enriched by geometric and essential lines that recall the world of architecture.



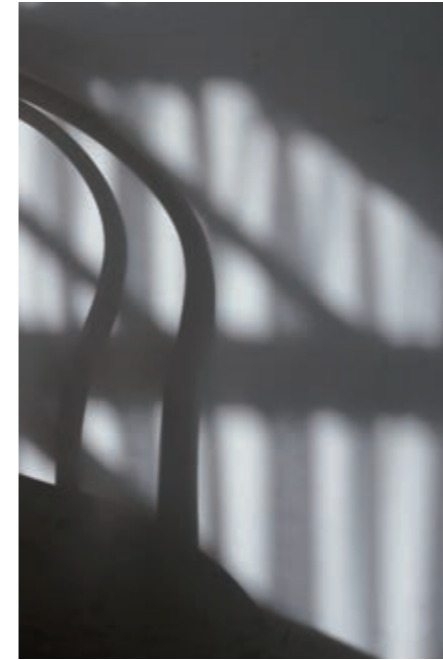
*wing*  
by pininfarina





# LEO

DESIGNED BY CLAUDIO BELLINI Studio



An exciting blast inspiration from the Sixties. This collection is a clear reference to the 60s world where harmony and calm were essential. Convenience and comfort, stability, lightness and adaptability are the main features of this outdoor furniture. This is LEO collection, characterised by the decisive sign of the armrests, which represent its distinctive feature such as the essentiality of the lines. The curved armrest has a strong character and gives a sense of lightness. The backrest with woven rope brings nature and richness to this collection.

# LEO

DESIGNED BY CLAUDIO BELLINI Studio







**RIVA**

DESIGNED BY CLAUDIO BELLINI Studio



In a game of solids and voids, of lights and shadows, the RIVA collection is born. It takes inspiration from the Moorish style of Andalusian architecture and it is characterised by its severe and essential lines. The empty spaces, created by the particular making of the yarn, bring to mind the arches of the Palace of Carlos V in Granada. A touch of Spain in your house.



RIVA

DESIGNED BY CLAUDIO BELLINI Studio



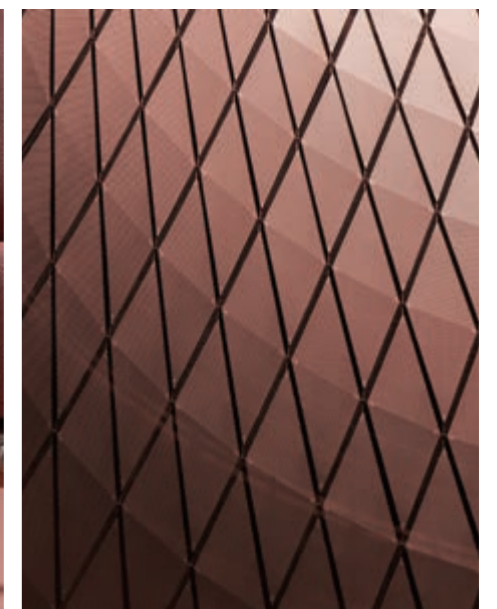




vasca

DESIGNED BY CLAUDIO BELLINI Studio

You will feel asleep cradled in the arms of VASCA collection. It takes inspiration from the long summer days, when you are so tired that the only thing you would do is to be rocked by the light of the moon. The weavings of the furnitures' structure remind you of the cord of an hammock childhood. It leaves in your soul the sensation of light-heartedness, well-being and levity, perfect mix at the end of a demanding day. Its rounded shapes and soft cushions convey a harmony and sense of calm. The wooden parts bring back a warm and gentle atmosphere.





vasca

DESIGNED BY CLAUDIO BELLINI Studio



# AiO

Designed By CLAUDIO BELLINI Studio

A collection that is inspired by the charm of Italy, its naturally expressive sceneries, relaxing seashores, and sunshine that is still and pure. The AiO collection is a feeling of absolute relaxation and comfort that envelops you and takes you to the exact Italian feeling. The majestic and refreshing texture of sands inspires the grains and surface of this collection. A sight to the eyes with its special and distinct color, especially when the sun shines on it highlighting its detailed textures. The iconic element of this collection is done with rope, which is known to be strong and tough material. The blend and showcasing of rope details with smooth curved silhouettes make this collection one to remember!





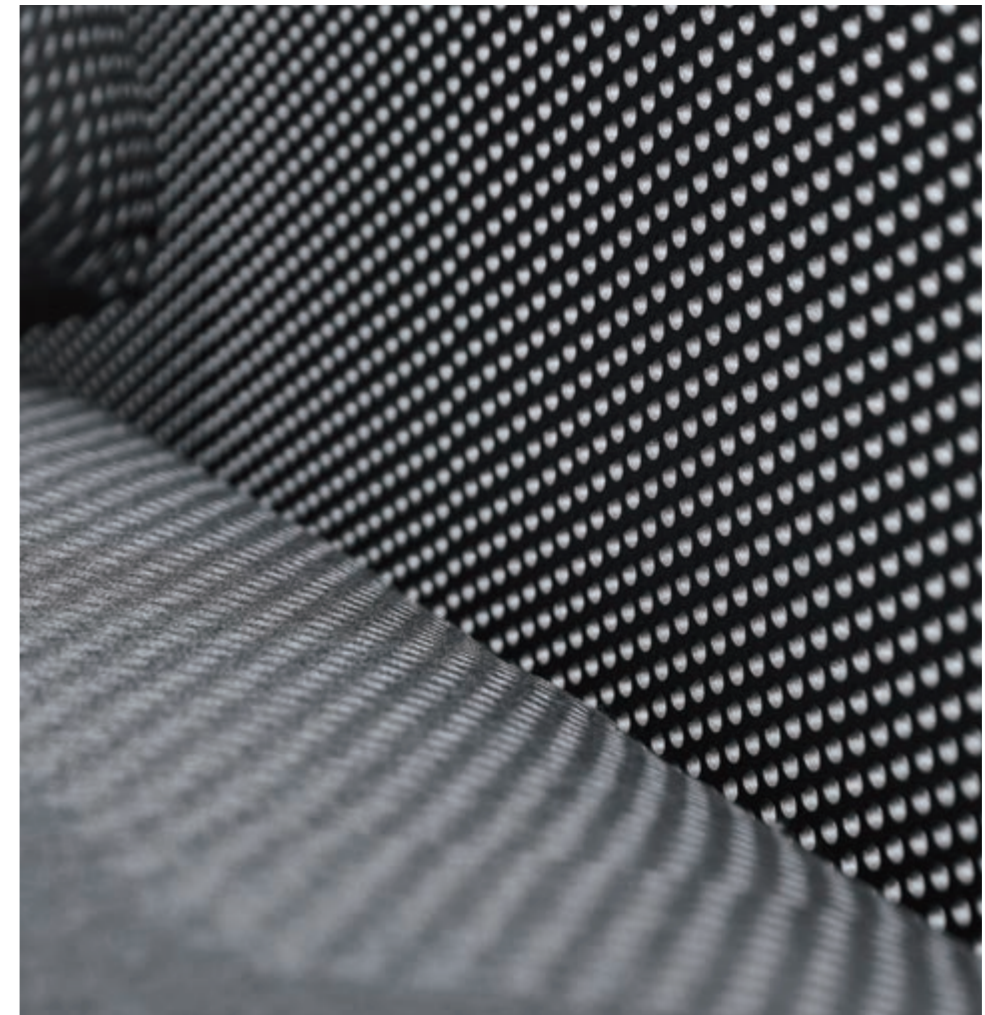




## HAVEN

DESIGNED BY CLAUDIO BELLINI Studio

As in the Roman temples, HAVEN is a collection that contains sobriety, elegance and minimalism. A structure designed to accommodate large cushions will make the experience a unique emotion. The transparencies recall the fishermen's nets used throughout the Mediterranean, bringing back the idea of freshness and lightness. Through the use of a simple wire mesh and columns the collection brings to light a timeless Greek /Roman vision.



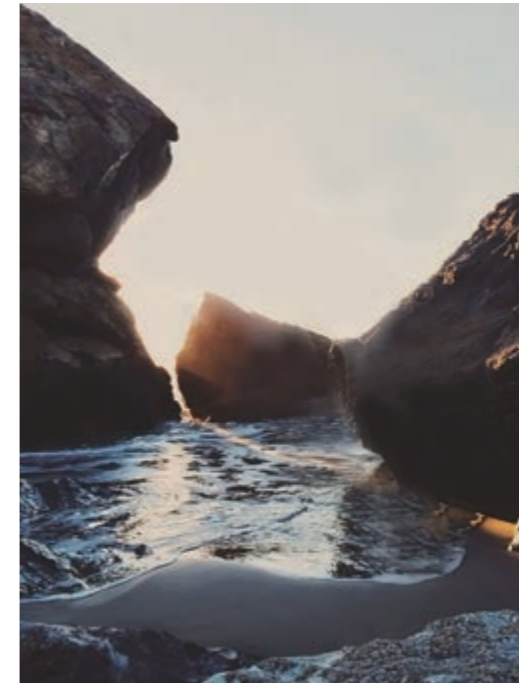






# CAMBUSA

DESIGNED BY CLAUDIO BELLINI Studio



CAMBUSA takes inspiration from the sea that appears golden beneath the sunlit sky. As the sunbeams onto each piece from this collection, it takes shape and accentuates the detailed gradients and elements. An exemplary display of smooth and precise design that showcases clean-cut square features in an enlivening manner. Just as the sun, warm and inviting shades are used to accomplish a collection that is made to suit the surrounding with utmost finesse. Just as the sea grants new hope, this collection is designed with hopes of delivering extreme comfort and a welcoming feeling.





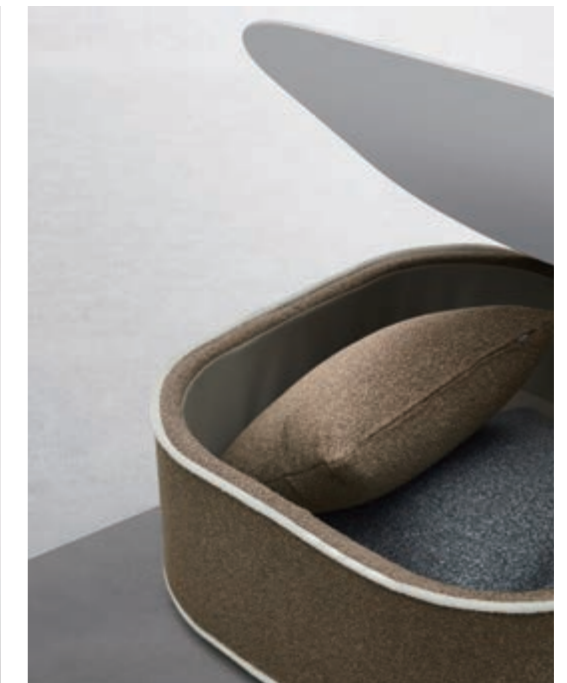


# OLWEN

DESIGNED BY CLAUDIO BELLINI Studio

OLWEN it's a poetic symphony of comfort and design that beckons the soul to unwind in its embrace. Named after the ethereal ATOLLO islands, this modular sofa transcends the ordinary, seamlessly blending the soft curves of nature with the modern allure of contemporary living.

The silhouette of OLWEN is a gentle ode to the undulating waves that caress the shores of the ATOLLO islands. Its soft, organic shapes echo the grace and tranquility of those secluded paradises, inviting you to surrender to the serenity that envelops every inch of this masterfully crafted piece. Each cushion, meticulously designed for both beauty and functionality, becomes a vessel of solace that you can arrange and rearrange effortlessly—creating your own oasis within the comfort of your home.







# PALLISAD

Designed By CLAUDIO BELLINI Studio



A mix of the minimalism of the Scandinavian architecture and the essence of a field's palisade, the right balance between man and nature. Simplicity and naturalness are the keywords of this collection. It's a way of living, of feeling things before drawing them or turning them into reality, into outdoor furnitures.









# BORRROMEO

DESIGNED BY CLAUDIO BELLINI Studio

A voyage to Europe in the summer and observing the wonderful blue reflections of the Mediterranean Sea, the concept is inspired by and conceptualized with the feeling that takes one to a sunny day near the seaside with an easy breeze blowing. Borromeo collection is a result that blends the expertise and know-how of HIGOLD with natural and pure elements in perfect harmony. This unique collection is where the simplicity of natural rope is combined with the modern lines of aluminum accurately to bring to life a feeling like no other. Mixing and blending conventional design with pleasant nostalgia! The scattering of sunlight by the molecules of the water inspires the textures and feel of this collection and is a reminder to relax and unwind in it.









A breeze in a shady corner of the arid and sunny lands of South Italy. A game of shadows. This is the LIGO collection.

Meant to relax, put themselves in a safe place and leave out all bad feelings. A simple construction but which carries with it distinctive and recognizable signs. Its shapes wrapped in fabric recall old tents collected on the beaches.

# LIGO

DESIGNED BY CLAUDIO BELLINI Studio







## BLOOM

DESIGNED BY CLAUDIO BELLINI Studio



# BALI

DESIGNED BY CLAUDIO BELLINI Studio







## PATIO

DESIGNED BY CLAUDIO BELLINI Studio







*wing* PARASOL  
*by pininfarina*





LEVIA PARASOL  
*by pininfarina*





reddot winner 2024



# TEKNO R

Designed By CLAUDIO BELLINI Studio





## LIFT PARASOL





## SICILIA PARASOL





PROJECTS GALLERY  
HIGOLD®

MOONLIGHT ii  
Dubai

Products:  
-ONDA





## JW MARRIOTT GOA

India

Products:

- GENEVA
- YORK
- EMOTI
- GLORIA
- SHENZHOU X
- ICOO

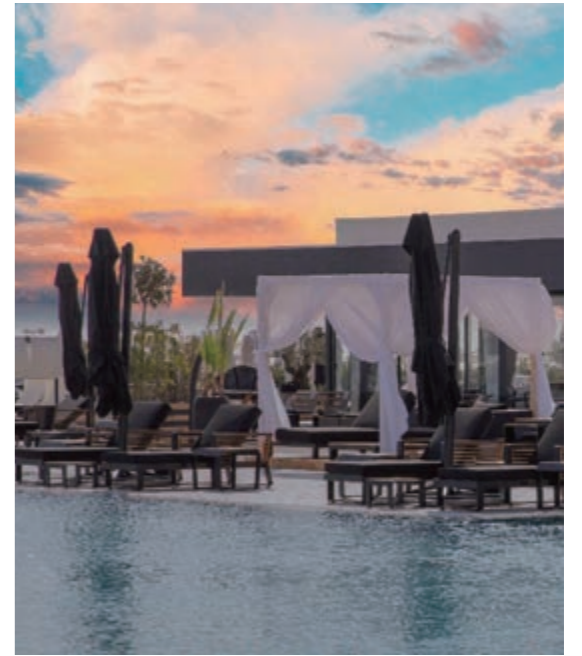




## ELEVEN ANGELS BEACH Romania

Products:

- LEVIA
- WING
- CAMBUSA
- NEW YORK





## HILTON SANTA MARTA

Colombia

Products:

- NOFI
- EMOTI
- YORK
- CHAMPION
- ICOO





LUX TALAY KHANOM HOTEL  
Thailand

Products:

- BORROMEO
- PALLISAD
- AIO
- RIVA





# Ikos Resort

Greece & Spain

Products:

- GENEVA
- PALACE
- SHENZHOU X
- EMOTI







# PHUKET THE COMMUNE

Thailand

Products:

- NOFI
- GENEVA





## 55 FIFTYFIVE

Poltu Quatu, Sardinia, La Spezia in Italy

Products:

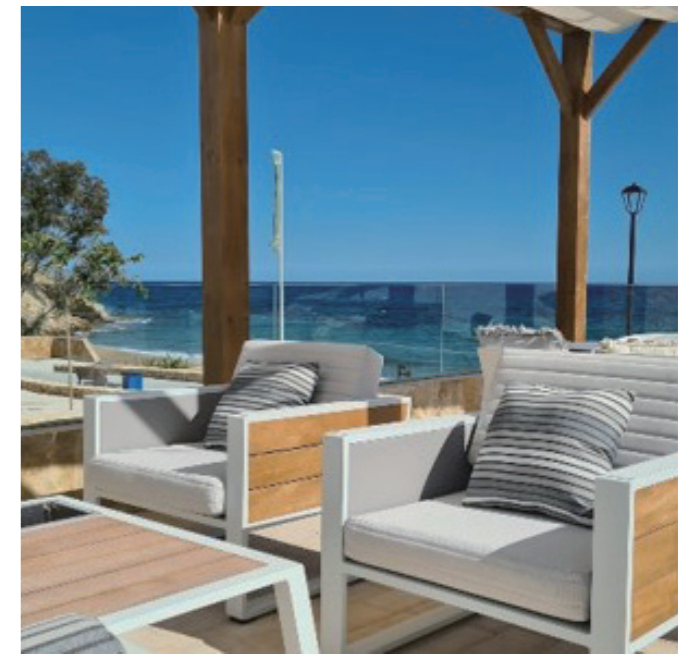
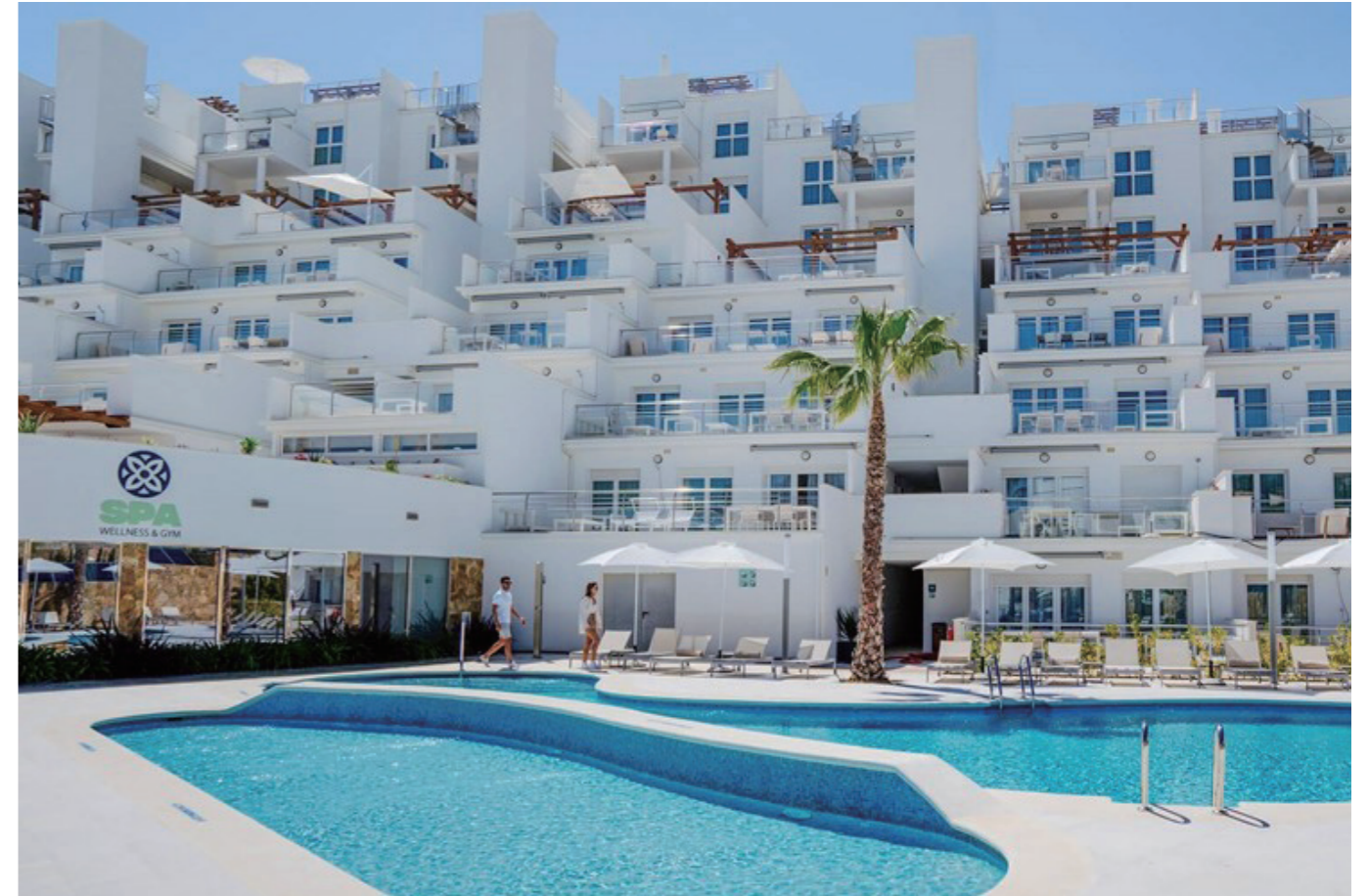
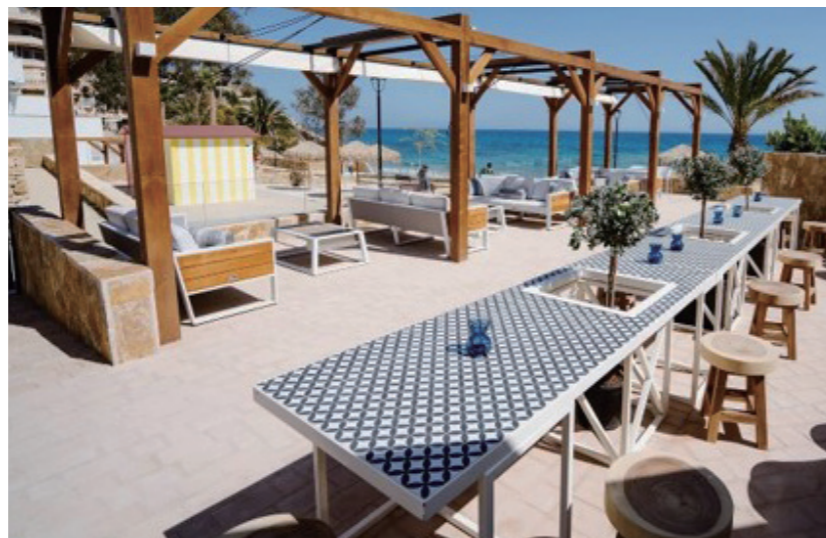
- Airport
- New York





Dormio Resort Costa Blanca Beach & Spa  
Spain

Products:  
- YORK





## The First Collection Business Bay Dubai

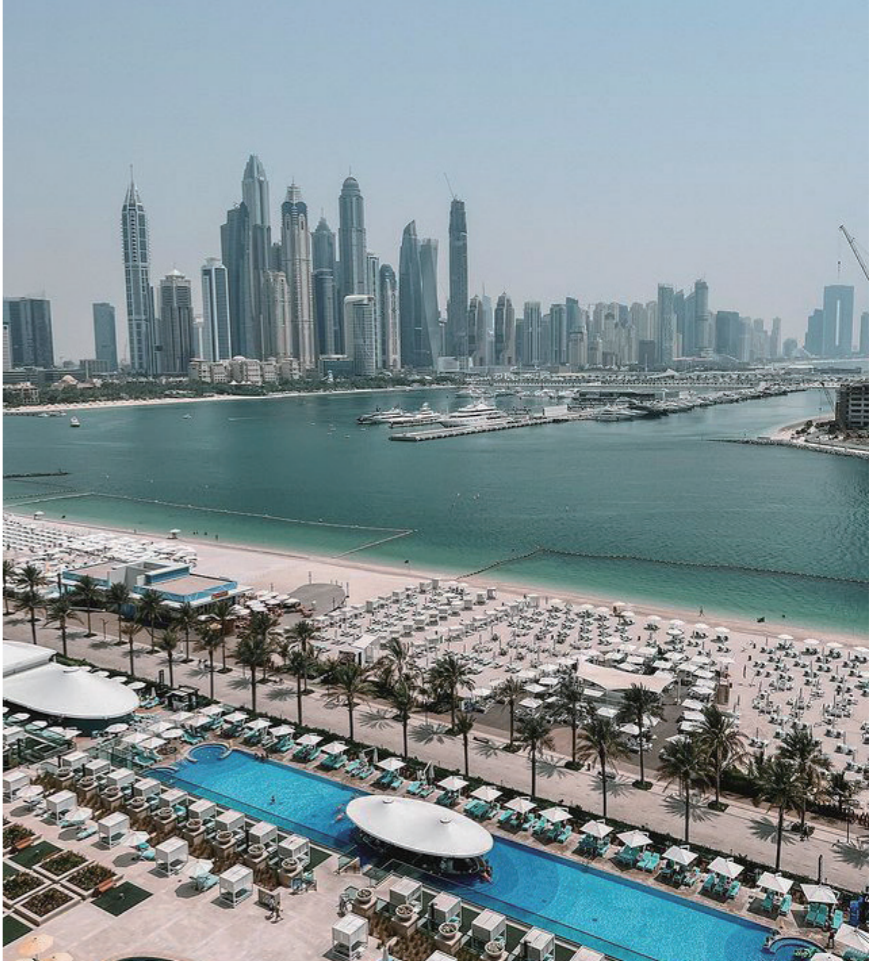
Products:

- GENEVA
- SHENZHOU X
- NOFI
- GLORIA
- CHAMPION





Hilton Dubai Palm Jumeirah  
Dubai





Taj Exotica Resort & Spa, The Palm  
Dubai





Hotel Quelle Nature Spa Resort  
Italy

Products:

- YORK





Rixos Premium Alamein  
Egypt

Products:

- NOFI
- AIRPORT
- HAWAII
- CLINT





EUPHORIA II  
-Turkey

Products:

-PALACE



HOTEL VERDE ZANZIBAR

Tanzania

Products:

-TULIP



Haeundae Beach Golf & Resort  
Korea

Products:

- NEW YORK
- POLO 2.0
- TULIP



Sani Resort  
Greece

Products:

- GENEVA
- LYRE
- TULIP
- TEAKMAN



WEST LAKE GOLF CLUB  
Hangzhou, China

Products:

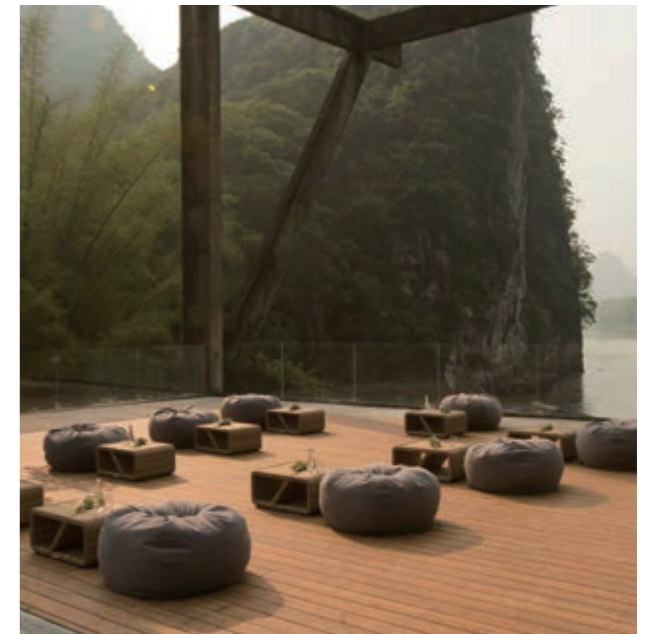
- AIRPORT
- HESTIA
- NOFI 3.0
- YORK





Yangshuo Sugarhouse (Alila )  
Guangxi, China

Products:  
- PALACE





Huawei Songshan Lake  
Guangdong, China

Products:  
- AIRPORT





Intercontinental Dameisha Resort  
Shenzhen, China

Products:

- EMOTI
- NEW YORK





Xunliao Bay Resort  
Guangdong, China

Products:

- ONDA
- NOFI
- EMOTI

